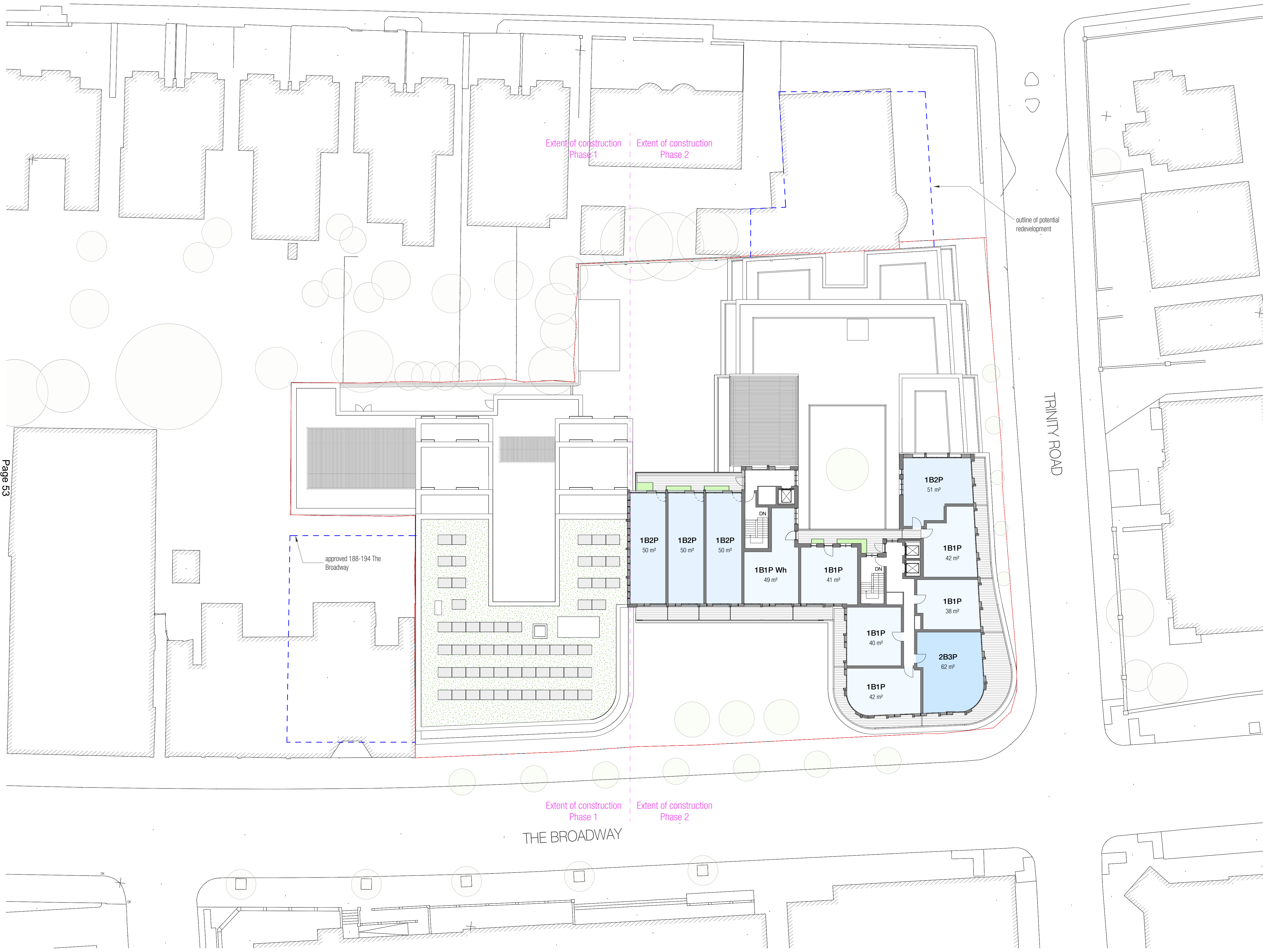




REVISIONS		
No.	DESCRIPTION	DATE
A	Planning Revision	11/11/20 AC AC

Rev A list of changes

- Reduction in bedroom size in the 1b1p units.
- Addition of 750mm zone around beds in 1b2p central block units.
- Boundary treatment to ground floor duplexes on Trinity Road reduced from 1.5m height to 1.2m.
- Ground floor duplex gardens/bins store reconfiguration.
- Additional side door from servicing corridor to central commercial unit.
- Amendments to the enlarged cycle parking spaces to provide a secured and lockable store.
- Short stay cycle parking relocated from Trinity Road to central piazza.
- Provision of clear link from service yard to residential concierge lobby.
- Windows in YMCA amended to show perforated panels to avoid overlooking.
- Screen aligned with vertical mullions in central block façade facing The Broadway.



Page 53

Key

- 1B 1P
- 1B 2P
- 2B 3P

Not for construction. All drawings are issued for information purposes only and subject to site survey, further design development, detailed design and building control approval and other statutory approvals. Drawings do not imply confirmation of legal boundaries or Title.

ARCHITECTURE

1 Nacroji Street | Clerkenwell | London | WC1X 0GB  
0207 553 3030 www.dla-design.co.uk

PROJECT  
200 THE BROADWAY, YMCA  
LONDON, SW19 1RY

TITLE  
Level 08 Plan

SCALE  
1 : 200 @ A1

DATE  
01/14/20

DLA REF  
2018-211

DRAWN  
TM

REVIEWED  
AC

PROJECT	ORIGINATOR	ZONE	LEVEL	TYPE	ROLE	NUMBER
YMCA	DLA		08	DR	A	208

STATUS  
FOR PLANNING

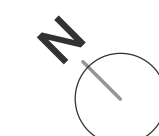
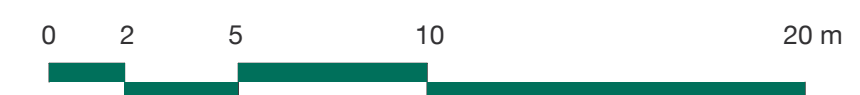
REVISION  
A

REVISION DESCRIPTION

Proposed Eighth Floor Plan

1 : 200

Key  
Application site Boundary



This page is intentionally left blank